

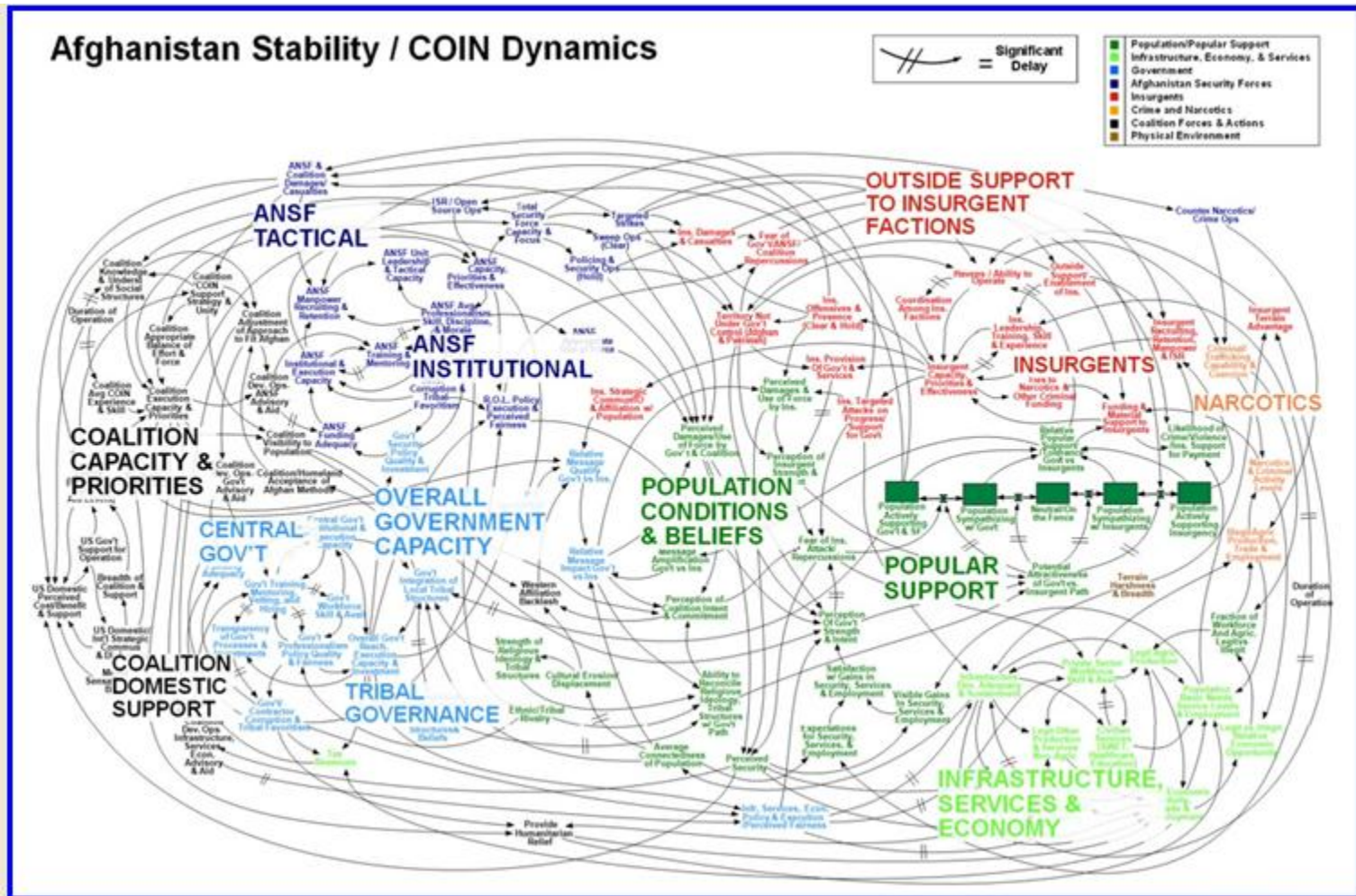
Out Briefing



DELIVERABLES

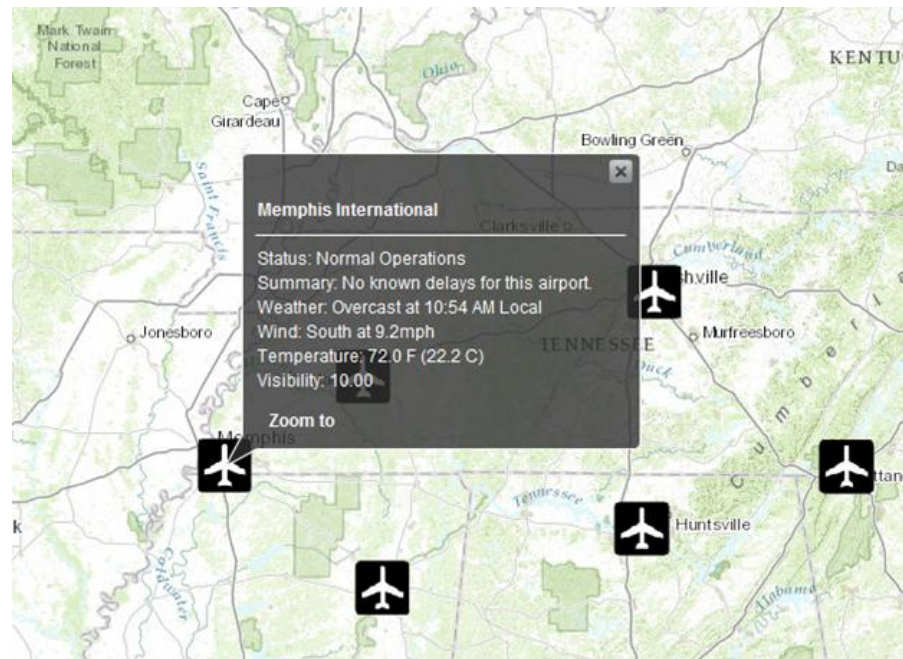
- What air related functions need to be designated as an Essential Element of Information (EEI)?
- Who has or owns the information?
- How do we capture this critical information?
- Can the information be mapped and how should it be displayed?

Afghanistan Stability / COIN Dynamics



What are the EEIs?

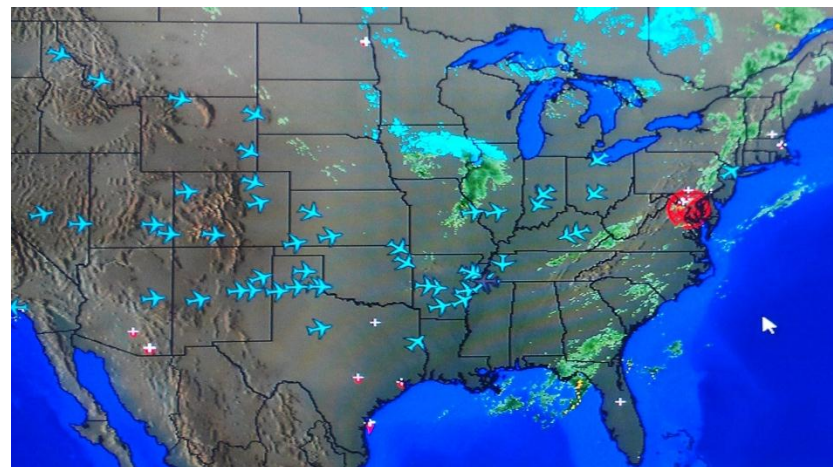
- AIRPORT STATUS
 - White - Unknown
 - Green – Fully Operational
 - Yellow – Limited Ops (click to get data)
 - Red – Closed
- Other Critical Airport Data
 - Material Handling Equipment
 - Fuel, FBO Infrastructure
 - Crash, Fire, Rescue
 - Security, Maintenance
 - Staffing & Hours of Operations
 - MOG & Ramp Capacity



What are the EEIs?

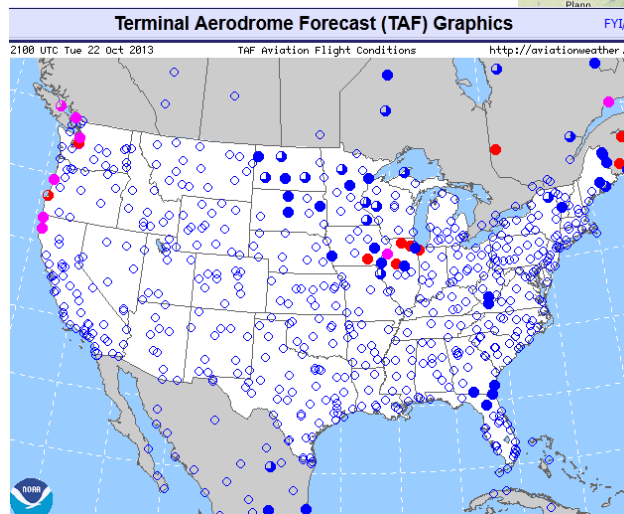
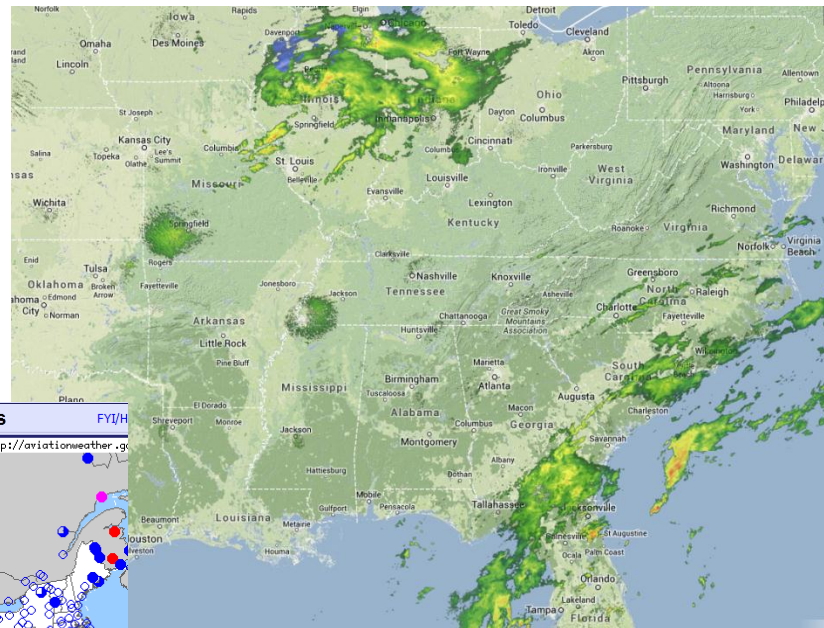
- NAS - National Airspace System

- Air Navigation System
- Air Traffic Control
- Airspace Status
- Temporary Flight Restrictions
- Flight Tracking
- Weather



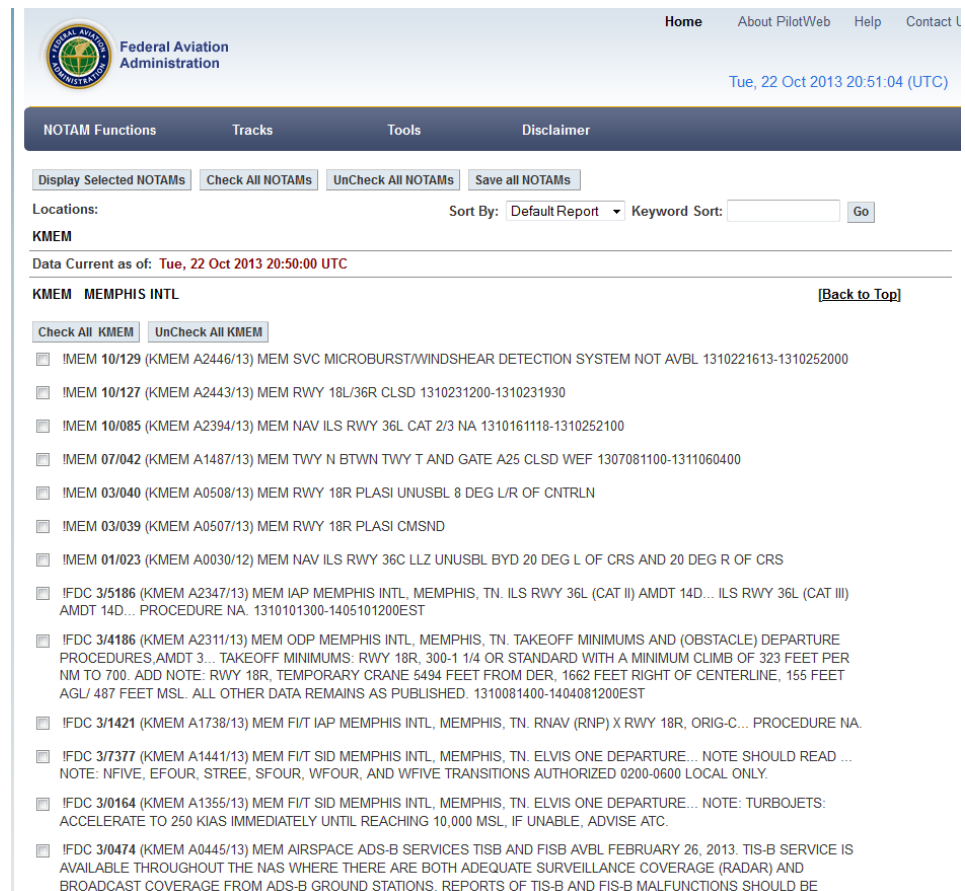
What are the EEIs?

- Current Radar Information
- Weather Layer
 - Airport Terminal Area Forecast
 - Current Airport Weather



What are the EEIs?

- Notices to Airman
 - NOTAM System
- Selective GIS Layer
 - Airport Specific



The screenshot shows the Federal Aviation Administration's NOTAM Functions page for KMEM. The page includes a header with the FAA logo and navigation links (Home, About PilotWeb, Help, Contact Us). Below the header, there are tabs for NOTAM Functions, Tracks, Tools, and Disclaimer. The NOTAM Functions tab is active, displaying a list of NOTAMs for KMEM. The list includes details such as the NOTAM number, location, and description. The page also features a search bar and a 'Display Selected NOTAMs' button.

Federal Aviation Administration

Home About PilotWeb Help Contact Us

Tue, 22 Oct 2013 20:51:04 (UTC)

NOTAM Functions Tracks Tools Disclaimer

Display Selected NOTAMs Check All NOTAMs UnCheck All NOTAMs Save all NOTAMs

Locations: Sort By: Default Report Keyword Sort: Go

KMEM

Data Current as of: Tue, 22 Oct 2013 20:50:00 UTC

KMEM MEMPHIS INTL [\[Back to Top\]](#)

Check All KMEM UnCheck All KMEM

- ☐ !MEM 10/129 (KMEM A2446/13) MEM SVC MICROBURST/WINDSHEAR DETECTION SYSTEM NOT AVBL 1310221613-1310252000
- ☐ !MEM 10/127 (KMEM A2443/13) MEM RWY 18L/36R CLSD 1310231200-1310231930
- ☐ !MEM 10/085 (KMEM A2394/13) MEM NAV ILS RWY 36L CAT 2/3 NA 1310161118-1310252100
- ☐ !MEM 07/042 (KMEM A1487/13) MEM TWY N BTWN TWY T AND GATE A25 CLSD WEF 1307081100-1311060400
- ☐ !MEM 03/040 (KMEM A0508/13) MEM RWY 18R PLASI UNUSBL 8 DEG L/R OF CNTRLN
- ☐ !MEM 03/039 (KMEM A0507/13) MEM RWY 18R PLASI CMSND
- ☐ !MEM 01/023 (KMEM A0030/12) MEM NAV ILS RWY 36C LLZ UNUSBL BYD 20 DEG L OF CRS AND 20 DEG R OF CRS
- ☐ !FDC 3/5186 (KMEM A2347/13) MEM IAP MEMPHIS INTL, MEMPHIS, TN. ILS RWY 36L (CAT II) AMDT 14D... ILS RWY 36L (CAT III) AMDT 14D... PROCEDURE NA. 1310101300-1405101200EST
- ☐ !FDC 3/4186 (KMEM A2311/13) MEM ODP MEMPHIS INTL, MEMPHIS, TN. TAKEOFF MINIMUMS AND (OBSTACLE) DEPARTURE PROCEDURES AMDT 3... TAKEOFF MINIMUMS: RWY 18R, 300-1 1/4 OR STANDARD WITH A MINIMUM CLIMB OF 323 FEET PER NM TO 700. ADD NOTE: RWY 18R, TEMPORARY CRANE 5494 FEET FROM DER, 1662 FEET RIGHT OF CENTERLINE, 155 FEET AGL/ 487 FEET MSL. ALL OTHER DATA REMAINS AS PUBLISHED. 1310081400-1404081200EST
- ☐ !FDC 3/1421 (KMEM A1738/13) MEM F/T IAP MEMPHIS INTL, MEMPHIS, TN. RNAV (RNP) X RWY 18R, ORIG-C... PROCEDURE NA.
- ☐ !FDC 3/7377 (KMEM A1441/13) MEM F/T SID MEMPHIS INTL, MEMPHIS, TN. ELVIS ONE DEPARTURE... NOTE SHOULD READ ... NOTE: NFIVE, EFOUR, STREE, SFOUR, WFOUR, AND WFIVE TRANSITIONS AUTHORIZED 0200-0600 LOCAL ONLY.
- ☐ !FDC 3/0164 (KMEM A1355/13) MEM F/T SID MEMPHIS INTL, MEMPHIS, TN. ELVIS ONE DEPARTURE... NOTE: TURBOJETS: ACCELERATE TO 250 KIAS IMMEDIATELY UNTIL REACHING 10,000 MSL, IF UNABLE, ADVISE ATC.
- ☐ !FDC 3/0474 (KMEM A0445/13) MEM AIRSPACE ADS-B SERVICES TISB AND FISB AVBL FEBRUARY 26, 2013. TIS-B SERVICE IS AVAILABLE THROUGHOUT THE NAS WHERE THERE ARE BOTH ADEQUATE SURVEILLANCE COVERAGE (RADAR) AND BROADCAST COVERAGE FROM ADS-B GROUND STATIONS. REPORTS OF TIS-B AND FIS-B MALFUNCTIONS SHOULD BE



PRE-CAP – AIR

What are the EEIs?

- Contingency Response Air Support Schedule (CRASS)

A	B	C	D	E	F	G	H	I	J	K
NOTE - FLIGHT INFORMATION IS LISTED FOR INFORMATION ONLY AND DOES NOT IMPLY A JFACC TASKING. ALL JFACC GAINED/ATTACHED/ASSIGNED ASSETS WILL RECEIVE TASKING VIA TBMCs (AND WILL BE LISTED HERE FOR INFO ONLY)										
USMC GND ALERT WORKSHEET CRASS 263										
UNIT	SRV	DEPT BASE	REC BASE	CALLSIGN	A/C TYPE	MISSION TYPE	MSN LOCATION	ON STATION	OFF STATION	REMARKS
HMM365	USMC	BIK	BIK	RUGBY	CH46E	HLOG	TBD	201002SEP05	202359ZSEP05	Alert 30
HMM365	USMC	BIK	BIK	RUGBY	CH46E	HLOG	TBD	201002SEP05	202359ZSEP05	Alert 30
HMH772	USMC	BIK	BIK	HUSTLER	CH53E	HLOG	TBD	201002SEP05	202359ZSEP05	Alert 30
HMH772	USMC	BIK	BIK	HUSTLER	CH53E	HLOG	TBD	201002SEP05	202359ZSEP05	Alert 30
ARMY GND ALERT WORKSHEET CRASS 263										
UNIT	SRV	DEPT BASE	REC BASE	CALLSIGN	A/C TYPE	MISSION TYPE	MSN LOCATION	ON STATION	OFF STATION	REMARKS
24MEDCO	NEARNG	KNBG	KNBG	DUSTOFF	UH-60	MEDEVAC	SURIBACHI	201000ZSEP05	210959ZSEP05	1st up Mission standby
24MEDCO	NEARNG	KNBG	KNBG	DUSTOFF	UH-60	MEDEVAC	SURIBACHI	201000ZSEP05	210959ZSEP05	1st up Mission standby
H8MEDCO	GAARNG	KNBG	KNBG	DUSTOFF	UH-1	MEDEVAC	SURIBACHI	201000ZSEP05	210959ZSEP05	2nd up Mission standby
H8MEDCO	GAARNG	KNBG	KNBG	DUSTOFF	UH-1	MEDEVAC	SURIBACHI	201000ZSEP05	210959ZSEP05	2nd up Mission standby
B 1-158th	1CAV	KNBG	KNBG	AS REQD	UH60	C2 JTFK-COR	KATRINA JOA	201000ZSEP05	210959ZSEP05	C2 in Dir SUP of JTFK-COR
B 1-158th	1CAV	KNBG	KNBG	AS REQD	UH60	C2 JTFK-COR	KATRINA JOA	201000ZSEP05	210959ZSEP05	C2 in Dir SUP of JTFK-COR
B 1-158th	1CAV	KNBG	KNBG	AS REQD	UH60	C2 JTFK-Staff	KATRINA JOA	201000ZSEP05	210959ZSEP05	C2 in Dir SUP of JTFK-Staff
B 1-158th	1CAV	KNBG	KNBG	AS REQD	UH60	C2 JTFK-Staff	KATRINA JOA	201000ZSEP05	210959ZSEP05	C2 in Dir SUP of JTFK-Staff
B 1-158th	1CAV	KNBG	KNBG	AS REQD	UH60	C2 JTFK-Staff	KATRINA JOA	201000ZSEP05	210959ZSEP05	C2 in Dir SUP of JTFK-Staff
USCG WORKSHEET CRASS 263										
UNIT	SRV	DEPT BASE	REC BASE	CALLSIGN	A/C TYPE	MISSION TYPE	MSN LOCATION	ON STATION	OFF STATION	REMARKS
ATC MOB	USCG	KMOB	KMOB	USCG 650X	H-95	SAR	KATRINA JOA	201000ZSEP05	210959ZSEP05	SECTOR MOBILE AOR
ATC MOB	USCG	KMOB	KMOB	USCG 650X	H-95	SAR - STBY	KATRINA JOA	201000ZSEP05	210959ZSEP05	SECTOR MOBILE AOR
ATC MOB	USCG	KMOB	KMOB	USCG 210X	HU-25	SAR/LOGISTICS/PAX	KATRINA JOA	201000ZSEP05	210959ZSEP05	SECTOR MOBILE / NEW ORL AOR
ATC MOB	USCG	KMOB	KMOB	USCG 210X	HU-25	SAR/LOGISTICS/PAX	KATRINA JOA	201000ZSEP05	210959ZSEP05	SECTOR MOBILE / NEW ORL AOR
A/S NOLA	USCG	KNBG	KNBG	USCG 650X	H-95	SAR	KATRINA JOA	201000ZSEP05	210959ZSEP05	SECTOR NEW ORLEANS AOR
A/S NOLA	USCG	KNBG	KNBG	USCG 650X	H-95	SAR - STBY	KATRINA JOA	201000ZSEP05	210959ZSEP05	SECTOR NEW ORLEANS AOR
A/S NOLA	USCG	KNBG	KNBG	USCG 650X	H-95	SAR - STBY	KATRINA JOA	201000ZSEP05	210959ZSEP05	SECTOR NEW ORLEANS AOR
A/S NOLA	USCG	KNBG	KNBG	USCG 650X	H-95	SAR - STBY	KATRINA JOA	201000ZSEP05	210959ZSEP05	SECTOR NEW ORLEANS AOR



CAPSTONE 14



What are the EEIs?

- Aviation Response Resources
 - Capabilities Based Platform -- Aircraft
 - Federal
 - State
 - Military
 - Commercial
 - General Aviation

What are the EEIs?

- Aviation Support -- Ground
 - Resource Capabilities
 - Military
 - State
 - Federal
 - Communications
 - Examples:
 - CRG, IAA, Mobile ATC, NDMS, CRAF, Medi-Evac

Data From Who and Where?

- Airport Status – including Other Critical Airport Data
 - Airport Authority (P)
 - Local EMA (S)
- National Airspace System& NOTAMs
 - FAA (P)
- Aviation Weather
 - Flight Service Station (P)
 - NOAA (S)
 - FAA (T)



PRE-CAP – AIR

Data From Who and Where?

- Aviation Response Resources
 - Military – National Guard JOC
 - Commercial – Flight Standards District Office, EMAC, GSA (contracts)
 - General Aviation – Preplanned Data from Associations or VOAD groups
 - Federal – FEMA
 - State -- SEOC



CAPSTONE 14



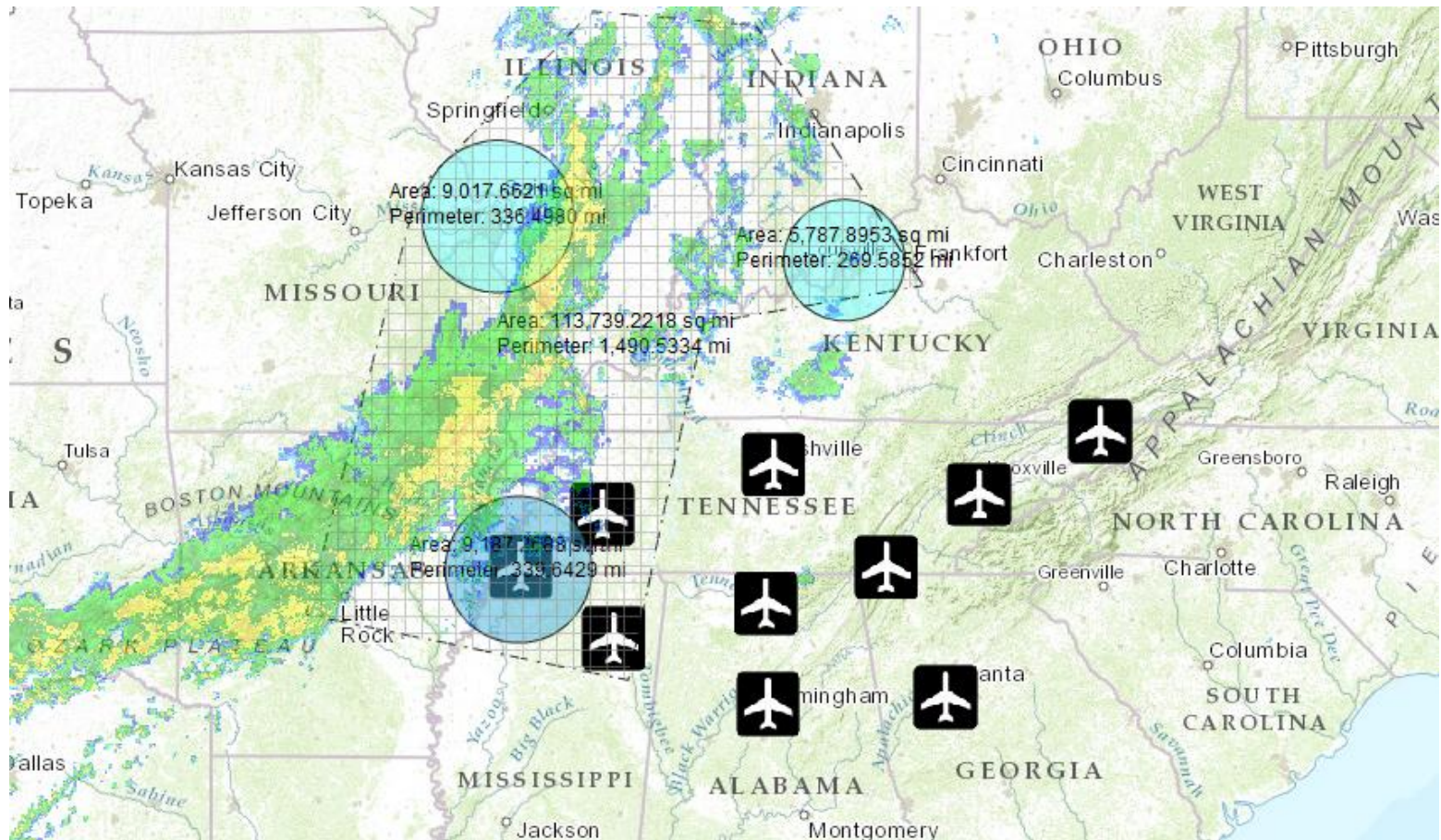
Data From Who and Where?

- Aviation Support -- Ground
 - Military –
 - State –
 - Federal –
 - Commercial –
- Recommend data collection during CAPSTONE 2014 RAW



PRE-CAP – AIR

Current Capabilities



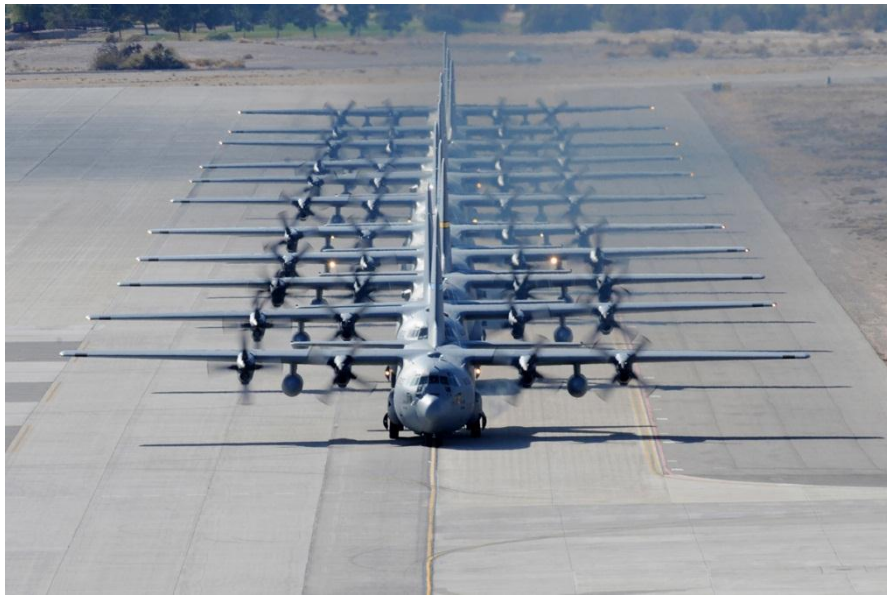
CAPSTONE 14



Future Capabilities

- Integration of New FAA Systems
 - Aircraft Tracking
 - Aviation Detections and Processing Terminal (ADAPT)
 - Transportation Status Display (TSD)
 - Currently Available – costs still TBD
- National Airspace System (NAS) Integrated Status Insight System (NISIS)
 - New system expected Dec 2013
 - Unknown Costs involved

Air Cargo is King...
Without it -- Nothing happens!!



Questions??

